

PLATINUM

Platinum PB-102A II



EXCLUSIVE NORTH AMERICAN AGENT



1152 Tourmaline Drive Newbury Park, CA 91320
Office: (805) 480-3300
www.MatchMachinery.com

In association with  CG MACHINERY INC.

PLATINUM



***Offline
Blanking
Machines***

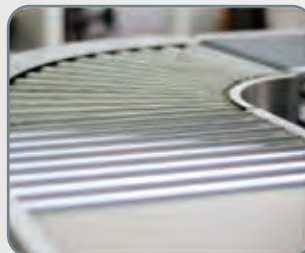
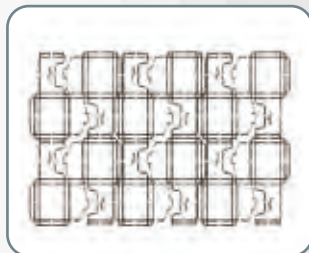
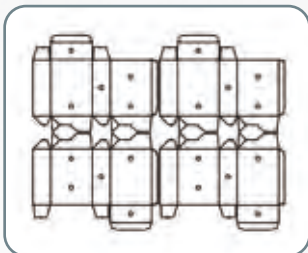
THE PREMIUM CHOICE

PLATINUM

Platinum PB-102A II

Dual Head Blanking Machine

Platinum PB-102A II



THE MOST COST EFFECTIVE WAY TO BLANK

INCREASED PRODUCTION

REDUCED LABOR

+ Equipment Introduction

Finally an affordable solution to the messy, noisy and labor intensive hand blanking with the traditional jackhammer or hand held carton stripper. The Platinum PB-102 model machines eliminate potential damage to the blanks while maintaining a highly controlled environment

+ Main Features

1. Fully Automatic
2. Dual-head blanking system for running sheets with nested blanks
3. Heavy-Duty, quality-built gantry structure main frame
4. Frame style supporting base for precision blanking action ensuring damage free loads
5. Equipped with high-precision linear bearing rails and servo motors for smooth and precise frame movement
6. Operator friendly touch screen for quick and simple programming
7. Automated loading to conveyor to reduce labor and increase blanking speed

+ Main Technical Parameters

PB-102A II	MODEL	PB-102A II
	MAX. SHEET SIZE	1020mm x 960mm (40.15" x 37.8")
	MIN. SHEET SIZE	300mm x 300mm (11.8" x 11.8")
	MAX. BLANK SIZE	450mm x 350mm (17.7" x 13.8")
	MIN. BLANK SIZE	50mm x 50mm/30mm x 30mm (1.96" x 1.96")/(1.18" x 1.18")
	MANIPULATOR SIZE	50 x 50 – 310 x 350mm
	MAXIMUM WORKING PRESSURE	2.5 T
	PRESSURE	8 Bar
	PILE HEIGHT	50mm - 85mm (2" - 3.3")
	MAX SPEED	18 Cycles / Minute
	TOTAL POWER	7kw
	ELECTRICAL POWER REQUIREMENTS	220V; 3-Phase; 60Hz; 32Amp
APPROX. NET WEIGHT	2240kg (4,938 lbs)	
MACHINE DIMENSIONS (L X W X H)	4000 x 2500 x 2000mm (13.12' x 8.2' x 6.56')	

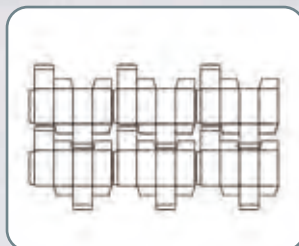
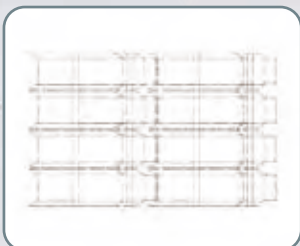
above specifications are subject to change without notice

PLATINUM

Platinum PB-102M II

Dual Head Blanking Machine

Platinum PB-102M II



AUTOMATED BLANKING DUAL HEADS FOR INCREASED PRODUCTION MANUAL REMOVAL

+ Equipment Introduction

Finally an affordable solution to the messy, noisy and labor intensive hand blanking with the traditional jackhammer or hand held carton stripper. The Platinum PB-102 model machines eliminate potential damage to the blanks while maintaining a highly controlled environment

+ Main Features

1. Dual-head blanking system
2. Heavy-Duty, quality-built gantry structure main frame
3. Frame style supporting base for precision blanking action ensuring damage free loads
4. Equipped with high-precision linear bearing rails and servo motors for smooth and precise frame movement
5. Operator friendly touch screen for quick and simple programming
6. Manual hand picking of blanks once stacked
7. Safety barrier sensor to stop the blanking action should the sensor detect an obstruction. Operator can only hand pick the blanks once each cycle is completed.

+ Main Technical Parameters

PB-102M II	MODEL	PB-102M II
	MAX. SHEET SIZE	1020mm x 960mm (40.15" x 37.8")
	MIN. SHEET SIZE	300mm x 300mm (11.8" x 11.8")
	MAX. BLANK SIZE	450mm x 350mm (17.7" x 13.8")
	MIN. BLANK SIZE	30mm x 30mm (1.18" x 1.18")
	MAXIMUM WORKING PRESSURE	2.5 T
	PRESSURE	8 Bar
	PILE HEIGHT	50mm - 85mm (2" - 3.3")
	MAX SPEED	18 Cycles / Minute
	TOTAL POWER	7kw
	ELECTRICAL POWER REQUIREMENT	220V; 3-Phase; 60Hz; 32Amp
	APPROX. NET WEIGHT	2000kg (4,409 lbs)
MACHINE DIMENSIONS (L X W X H)	3400 x 2300 x 2000mm (11.15' x 7.55' x 6.56')	

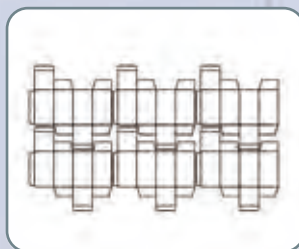
above specifications are subject to change without notice

PLATINUM

Platinum PB-102M

Single Head Blanking Machine

Platinum PB-102M



COST-EFFECTIVE, YET AUTOMATED FOR THE MOST BASIC DEMANDS

+ Equipment Introduction

Finally an affordable solution to the messy, noisy and labor intensive hand blanking with the traditional jackhammer or hand held carton stripper. The Platinum PB-102 model machines eliminate potential damage to the blanks while maintaining a highly controlled environment

+ Main Features

1. Single-head blanking system
2. Heavy-Duty, quality-built gantry structure main frame
3. Frame style supporting base for precision blanking action ensuring damage free loads
4. Equipped with high-precision linear bearing rails and servo motors for smooth and precise frame movement
5. Operator friendly touch screen for quick and simple programming
6. Manual hand picking of blanks once stacked
7. Safety barrier sensor to stop the blanking action should the sensor detect an obstruction. Operator can only hand pick the blanks once each cycle is completed.

+ Main Technical Parameters

PB-102M	MODEL	PB-102M
	MAX. SHEET SIZE	1020mm x 960mm (40.15" x 37.8")
	MIN. SHEET SIZE	300mm x 300mm (11.8" x 11.8")
	MAX. BLANK SIZE	450mm x 350mm (17.7" x 13.8")
	MIN. BLANK SIZE	30mm x 30mm (1.18" x 1.18")
	MAXIMUM WORKING PRESSURE	2.5 T
	PRESSURE	6 Bar
	PILE HEIGHT	50mm - 85mm (2" - 3.3")
	MAX SPEED	18 Cycles / Minute
	TOTAL POWER	6.3kw
	ELECTRICAL POWER REQUIREMENT	220V; 3-Phase; 60Hz; 32Amp
	APPROX. NET WEIGHT	1800kg (4,938 lbs)
MACHINE DIMENSIONS (L X W X H)	2800 x 2200 x 2000mm (9.18' x 7.22' x 6.56')	

above specifications are subject to change without notice