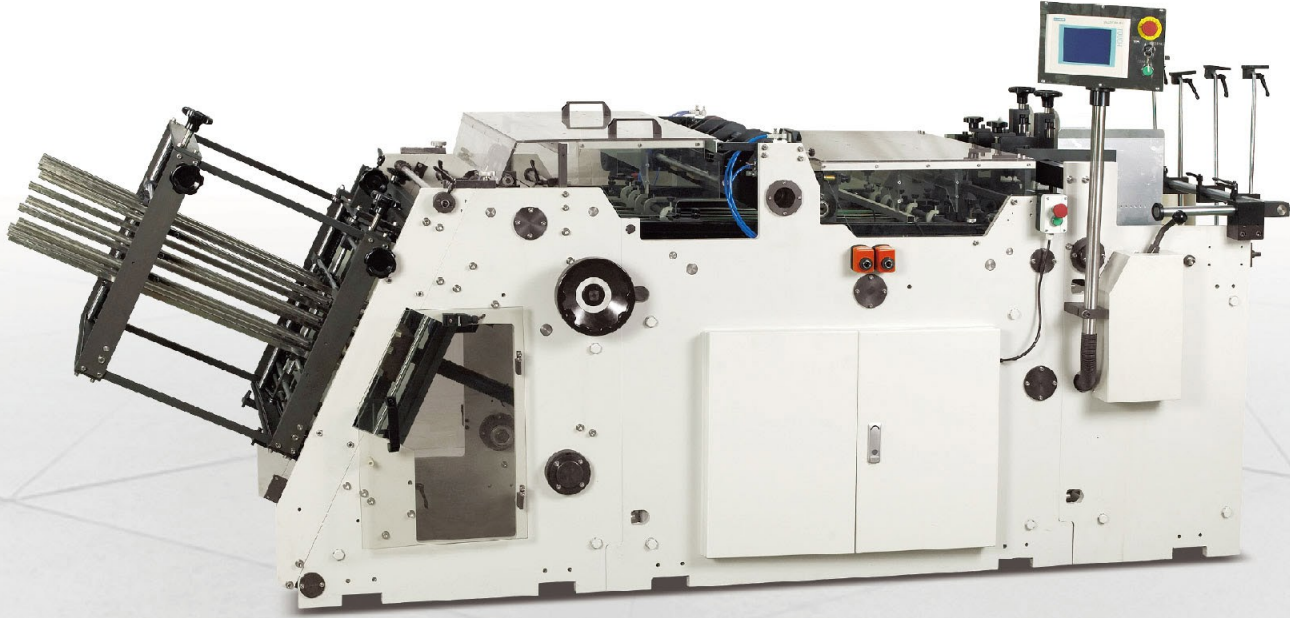


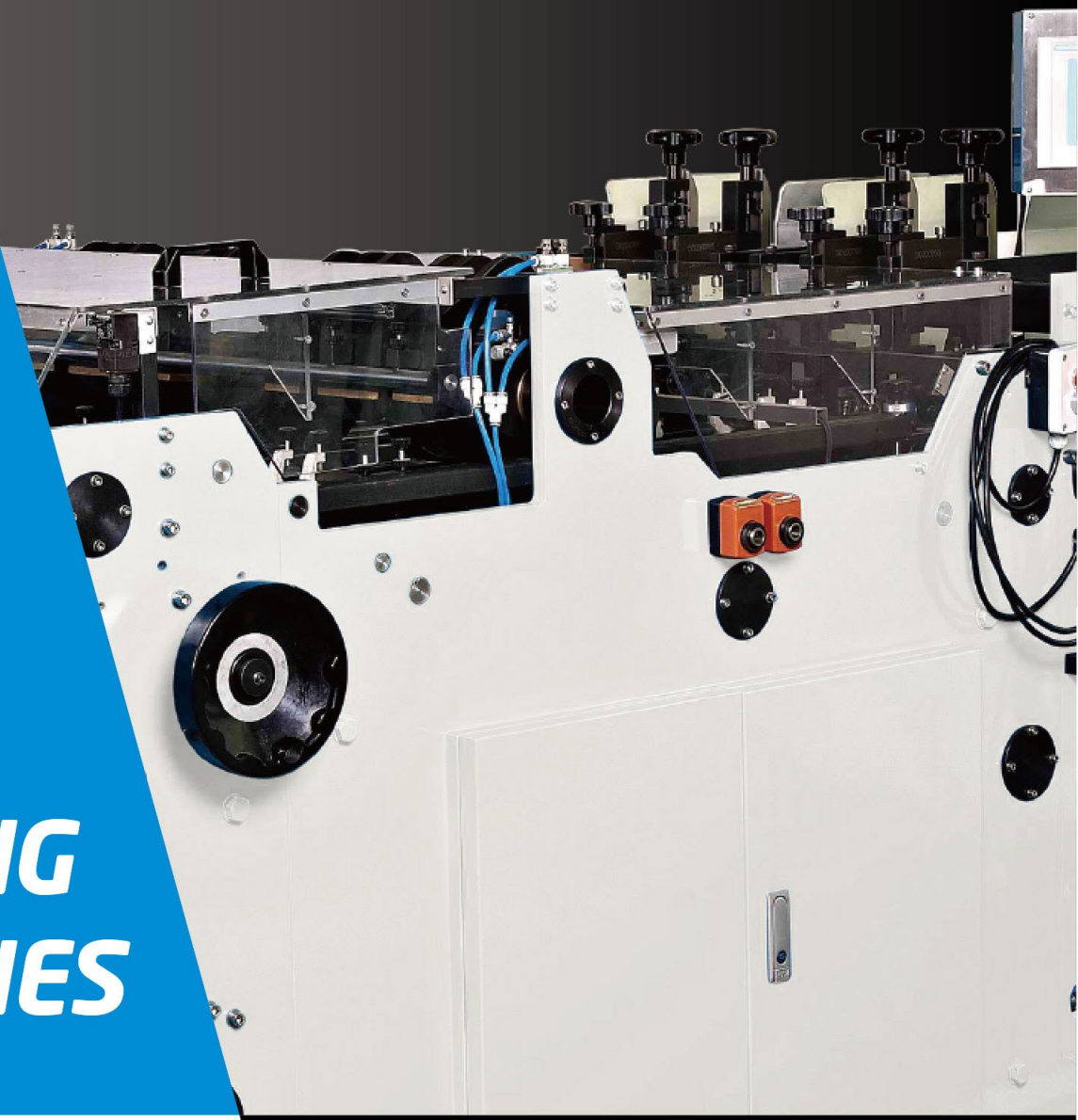
**PLATINUM**

L800-A



**PLATINUM**

**TRAY  
FORMING  
MACHINES**



**THE PREMIUM CHOICE**

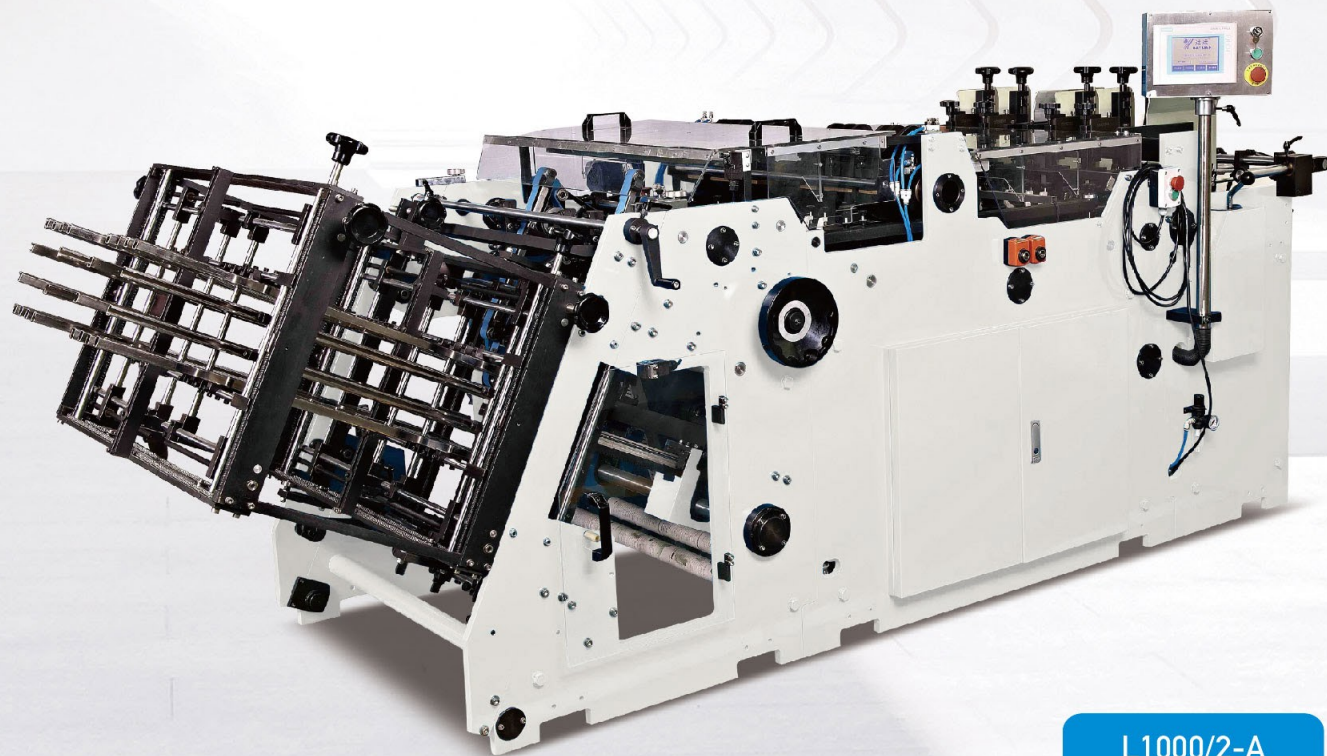
EXCLUSIVE NORTH AMERICAN AGENT  
**MATCH  
MACHINERY, INC.**   
Specializing in Graphic Finishing Equipment

1152 Tourmaline Drive Newbury Park, CA 91320  
Office: (805) 480-3300  
Sales@MatchMachinery.com  
www.MatchMachinery.com

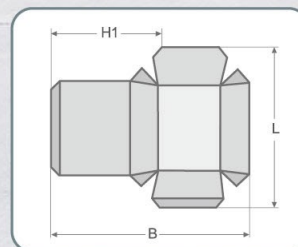
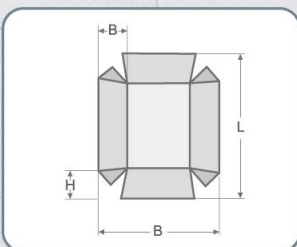
# L1000/2-A AND L1000/2-B

## Tray Forming Machine

Dual Lane



L1000/2-A



## HIGH QUALITY, WIDE RANGING, SIMPLISTIC OPERATION AT AN AFFORDABLE PRICE

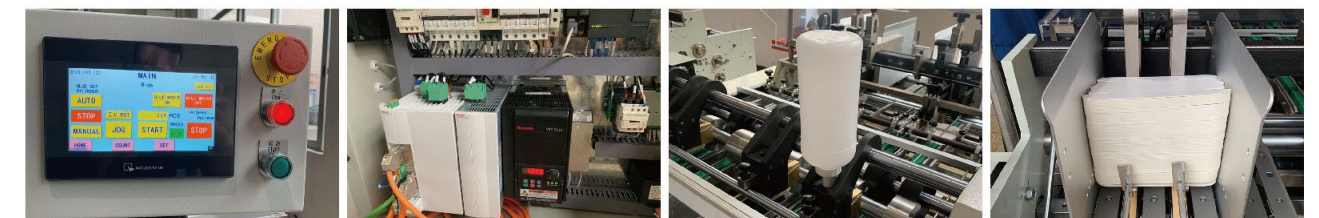
### + Equipment Introduction

Finally, a dependable and affordable solution to constructing the perfect product with simplicity and efficiency. Our tray formers are capable of producing the widest range of trays, clamshells, scoops and take-out food buckets while maintain that competitive edge.

1. L1000/2-A Runs two lanes same style boxes.
2. L1000/2-B Runs different style boxes on each lane simultaneously

### + Main Features

1. Voltage: 220V/60HZ.
2. Covering Area: 4.0M\*1.4M.
3. The total Power: 8KW.
4. Maximum Production Speed: 400 pcs/min.
5. Air Pressure: 0.6 Mpa (Dry and clean compressed air).
6. Materials: Paper Board 200-600gsm; corrugated board paper with thickness not exceed 1.5MM.



### + Main Technical Parameters

L1000/2-A/B	MODEL	L1000-2-A/B	
	BLANK LENGTH	L	100mm-450mm 100mm-450mm(3.93"x17.71")
	BLANK LENGTH	B	100mm-420mm 100mm-420mm(3.93"x16.53")
	HEIGHT OF SIDE FLAPS	H	15mm-220mm 15mm-250mm(0.59"x9.84")
	HEIGHT OF SIDE FLAPS+LID	H1	50mm-220mm 50mm-250mm(1.96"x9.84")
	CONICITY	5°-40°	
	NET WEIGHT	2000kg	
	DIMENSIONS	3600mm x 1860mm x 1540mm	

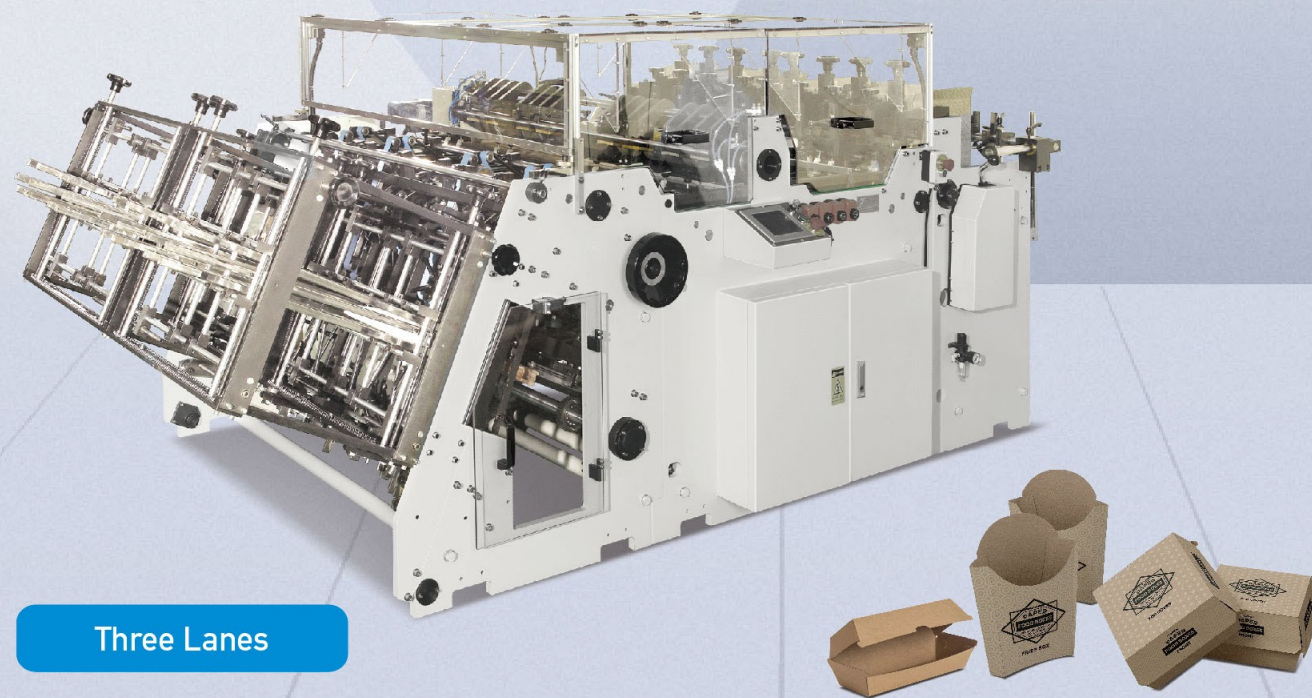
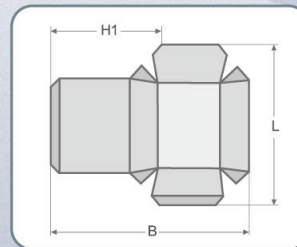
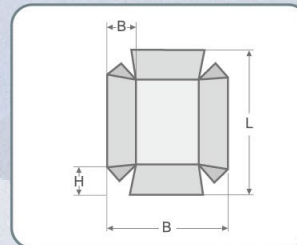
\*above specifications are subject to change without notice\*

# L1350/3-A

## Tray Forming Machine

### + Main Features

1. Voltage: 220V/60HZ.
2. Covering Area: 4.0M\*1.2M.
3. The total Power: 9KW.
4. Maximum Production Speed: 600 pcs/min.
5. Air Pressure: 0.6 Mpa (Dryand clean compressed air).
6. Materials: Paper Board 200-600gsm; corrugated board paper with thickness not exceed 1.5MM.



Three Lanes

### + Main Technical Parameters

L1350/3-A	MODEL	L1350/3-A		
	BLANK LENGTH	L	100mm-450mm	100mm-450mm(3.93" x17.71" )
	BLANK WIDTH	B	100mm-360mm	100mm-360mm(3.93" x14.17" )
	HEIGHT OF SIDE FLAPS	H	15mm-220mm	15mm-220mm(0.59" x8.66" )
	HEIGHT OF SIDE FLAPS+LID	H1	50mm-220mm	50mm-220mm(1.96" x8.66" )
	CONICITY	5°-40°		
	NET WEIGHT	2550kg		
	DIMENSIONS	3600mmx 2200mm x 1500mm		

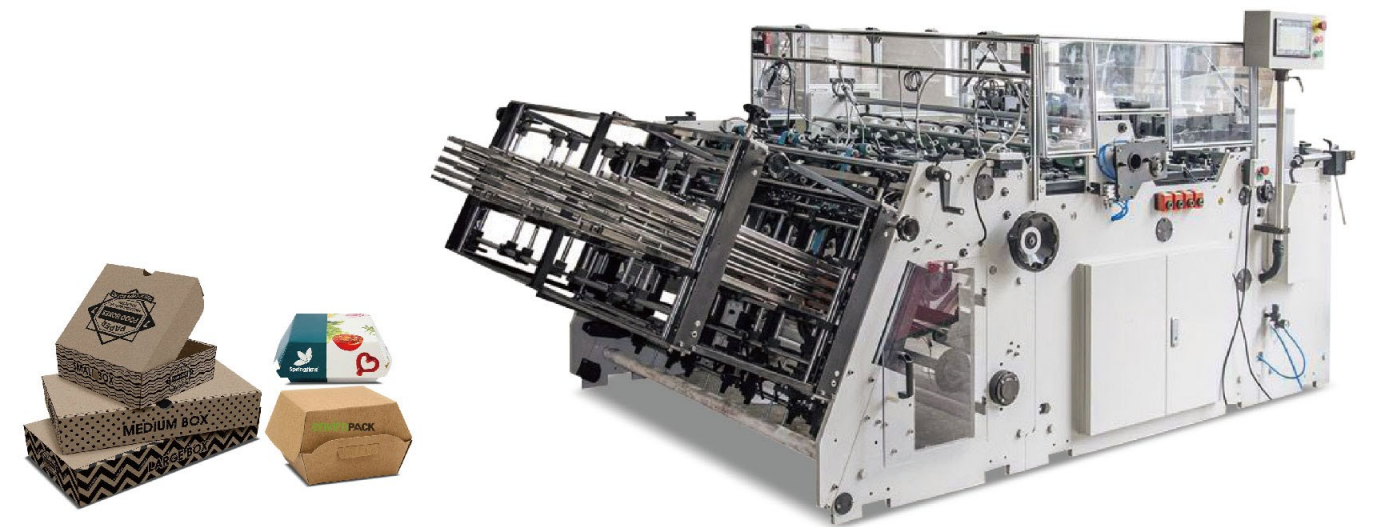
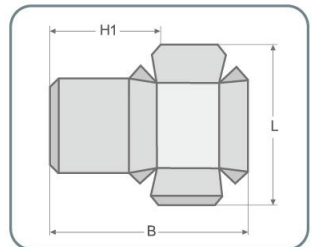
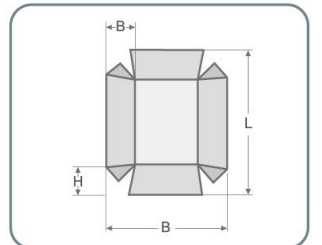
\*above specifications are subject to change without notice\*

# L1560/4-A

## Tray Forming Machine

### + Main Features

1. Voltage: 220V/60HZ.
2. Covering Area: 4.0M\*1.6M.
3. The total Power: 11W.
4. Maximum Production Speed: 800 pcs/min.
5. Air Pressure: 0.6 Mpa (Dryand clean compressed air).
6. Materials: Paper Board 200-600gsm; corrugated board paper with thickness not exceed 1.5MM.



Four Lanes

### + Main Technical Parameters

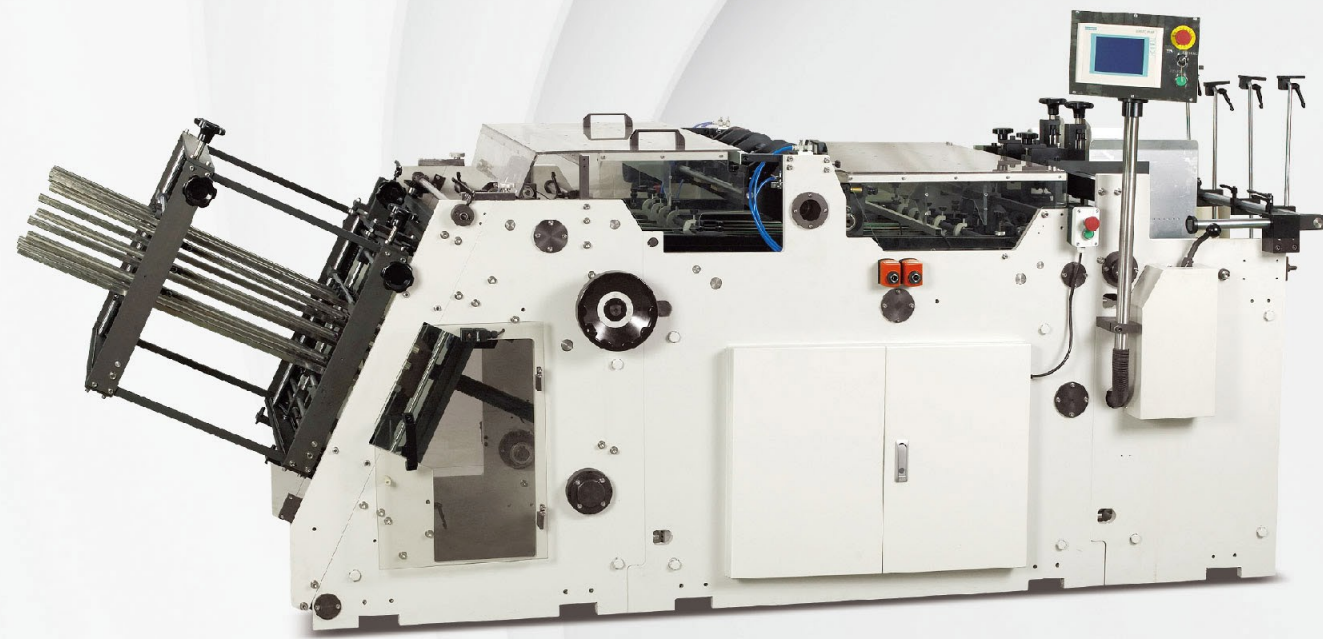
L1560/4-A	MODEL	L1560/4-A		
	BLANK LENGTH	L	100mm-450mm	100mm-450mm(3.93" x17.71" )
	BLANK WIDTH	B	100mm-300mm	100mm-300mm(3.93" x11.81" )
	HEIGHT OF SIDE FLAPS	H	15mm-220mm	15mm-220mm(0.59" x8.66" )
	HEIGHT OF SIDE FLAPS+LID	H1	50mm-220mm	50mm-220mm(1.96" x8.66" )
	CONICITY	5°-40°		
	NET WEIGHT	3090kg		
	DIMENSIONS	3600mm x 2300mmx 1500mm		

\*above specifications are subject to change without notice\*

# L800-A

## Tray Forming Machine

Single Lane



# COST-EFFECTIVE, YET AUTOMATED FOR THE MOST BASIC DEMANDS

### + Equipment Introduction

Finally, a dependable and affordable solution to constructing the perfect product with simplicity and efficiency. Our tray formers are capable of producing the widest range of trays, clamshells, scoops and take-out food buckets while maintain that competitive edge.

L800-A adopts a servo system to control the punching head.

### + Specifications

1. Voltage: 220V/60HZ.
2. Covering Area: 4.0M\*1.2M.
3. The total Power: L800-A:8KW L800-C:5KW.
4. Maximum Production Speed: 200 pcs/min.
5. Air Pressure: 0.6 Mpa (Dryand clean compressed air).
6. Materials: Paper Board 200-600gsm; corrugated board paper with thickness not exceed 1.5MM.

### + Main Technical Parameters

L800-A	MODEL		L800-A	
	BLANK LENGTH	L	100mm-450mm	100mm-450mm(3.93"x17.71")
BLANK LENGTH	B	100mm-680mm	100mm-680mm(3.93"x26.77")	
HEIGHT OF SIDE FLAPS	H	15mm-220mm	15mm-220mm(0.59"x8.66")	
HEIGHT OF SIDE	H1	50mm-220mm	50mm-220mm(1.96"x8.66")	
FLAPS+LID CONICITY		5°-40°		
NET WEIGHT			1875kg	
DIMENSIONS			3600mmx 1560mmx 1540mm	

\*above specifications are subject to change without notice\*

